



Spare parts for:

Cooking equipment



Suitable for:

CB



This catalogue is automatically generated.
Therefore, the sequence of the items might
not be always shown at best.

Updates will be issued in case of additions
and/or amendments.

*Suitable **universal spare parts** may not be included*





Suitable for:

CB



Suitable for:

Air regulators

3352014 AERATION REGULATOR
internal \varnothing 16 mm - external \varnothing 18 mm
height 42 mm



CB 08120045

3352015 AERATION REGULATOR
internal \varnothing 18 mm - external \varnothing 20 mm
height 42 mm



CB 08120029

Bearings

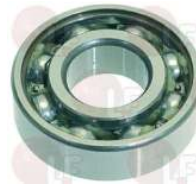
1199062 BEARING 6001 2Z
 \varnothing external 28 mm - \varnothing internal 12 mm - thickness 8



CB 03CC0004

CB 03050626

3063029 BEARING 6204 Z
external \varnothing 47 mm - internal \varnothing 20 mm - thickness 14mm
for Rotisserie (CB)



CB 03050662

Cables for piezo igniters

3001039 IGNITION CABLE 900 mm
with faston terminal 3x0.8 mm for ignition
with faston terminal 3x0.8 mm for plug



CB 08060601

3001016 SIT IGNITION LEAD 1000 mm
with faston \varnothing 2.4 mm for ignition
with faston \varnothing 4 mm for electrode



CB 08061352

Contactors

3351049 CONTACTOR SIEMENS 3RT1016-1AP01
9A 400V 4Kw - coil 230V 50/60Hz
3 normally open contacts
1 normally open auxiliary contact
for Food-service trolley (MODULINE) RM112M



CB 07070001



Electronic thermostats and controllers

3445291 THERMOSTAT EVK411 TCJ/TCK/PT100

power supply 230V 50Hz
 thermostat setting range 0+250°C
 with free parameters setting
 room temperature -5+65°C
 TCJ-TCK-PT100 type probe (not included)
 connections by screwed terminal block
 front dimension 74x32x67 mm
 mounting hole 71x29 mm



CB 09010030

Energy regulators

3350026 ENERGY ADJUSTER

contact capacity 230V 13A - max temperature 125°C
 D-shaped pin \varnothing 6x4.6 mm
 double rotation direction
 for PYROCERAM. TOPS-SALAMANDERS-POTATO WARMERS
 for Boiling pan (MORICE)
 for Boiling pan (THIRODE)
 for Bratt pan (MORICE)
 for Bratt pan (THIRODE)
 for Fry top (LOTUS) - Series 60 - Series 65
 Series 70
 for Grill (THIRODE)
 for Hot plate (EMMEPI) - Series 650 - Series 700
 for Hot plate (GICO) - Series 110 - Series 700
 Series 920
 for Pasta cooker electric (BONNET)



CB 09020004

Gas burners

3023092 BURNER 400x270 mm

overall length 500 mm
 made of stainless steel - Kcal/h 18000 ca
 for old series
 for Lava rock grill gas (CB)



CB 08CC0005

CB 08111361

3020093
BURNER INJECTOR ASSEMBLY

with LPG and natural gas nozzles M9x1
 pipe \varnothing 12 mm



CB 01007000

CB 08100001

CB 08100003



Suitable for:

CB



3023093 BURNER 400x370 mm
overall length 500 mm
made of stainless steel - Kcal/h 22000 ca
for old series
for Lava rock grill gas (CB)



CB 08CC0026

CB 08111343

Suitable for:

3020093 BURNER INJECTOR ASSEMBLY
with LPG and natural gas nozzles M9x1
pipe ø 12 mm



CB 01007000

CB 08100001

CB 08100003

3023094 BURNER 400x430 mm
overall length 500 mm
made of stainless steel - Kcal/h 27000 ca
for old series
for Lava rock grill gas (CB)



CB 08CC0013

CB 08111328

3020093 BURNER INJECTOR ASSEMBLY
with LPG and natural gas nozzles M9x1
pipe ø 12 mm



CB 01007000

CB 08100001

CB 08100003

3023220 BURNER 480x250 mm
made of stainless steel
for Lava rock grill gas (CB) I80MOB/P - I80P



CB 08CC0056

CB 08110013

3352014 AERATION REGULATOR
internal ø 16 mm - external ø 18 mm
height 42 mm



CB 08120045

3023221 BURNER 480x325 mm
made of stainless steel
for Lava rock grill gas (CB) I47 - I47MOB



CB 08CC0044

CB 08110009

3352015 AERATION REGULATOR
internal ø 18 mm - external ø 20 mm
height 42 mm



CB 08120029

3023222 BURNER 480x510 mm
made of stainless steel
for Lava rock grill gas (CB) I65 - I65MOB



CB 08CC0046

CB 08110010

3352015 AERATION REGULATOR
internal ø 18 mm - external ø 20 mm
height 42 mm



CB 08120029



CB



Suitable for:

Suitable for:

3023150 BURNER 725x40 mm
overall length 755 mm
made of STAINLESS steel
for Rotisserie gas (CB) G-12P - G-20P

3023151 GAS BURNER 995x40 mm
overall length 1050 mm
made of STAINLESS STEEL
for Rotisserie gas (CB) P10/4GAS - P10/5GAS
P10/6GAS - P10/8GAS



CB 08CC0016

CB 08110583

CB 08CC0029

CB 08110614

Gas taps and accessories

3348002 GAS COCK 22/0
with pilot flame
with horizontal flange
fittings \varnothing M20x1.5mm
with flow regulator
thermocouple connection M8x1
D-shaped pin \varnothing 10x8 mm
for Boiling pan (THIRODE)
for Bratt pan gas (THIRODE) SA30 - SA41
for Grill (FAGOR) - Series 900



CB 08020022

CB 08020023

Gearmotors

3240924 GEARMOTOR 12W 230V 50/60Hz 2RPM
complete with bushing
external \varnothing 16 mm - internal \varnothing 12 mm

3240101 GEARMOTOR 330N 25W 230V 50Hz
TYPE K9113061 - 2rpm
pin 8.5x5 mm - pin height 15 mm
for Rotisserie electric (CB) E-12P - E-8P - G-8P
for Rotisserie gas (CB) G-12P
for Sausage grill (CB)



CB 07010116

CB 07010155

CB 07010053

CB 07010084

CB 07010510

Handles

3398021 OVEN DOOR CATCH
distance between holes 47 mm
catch distance 27 mm



CB



Suitable for:

CB



Suitable for:

Heating elements

3755830 CERAMIC HEATING ELEMENT 1000W 230V
length 240 mm - width 60 mm



CB 07030064

3355829 CERAMIC HEATING ELEMENT 650W 230V
length 245 mm - width 60 mm
for Potato heater electric (ZANUSSI) SCCE350



CB 07030063

3355357 HEATING ELEMENT 1450W 230V
overall length 740 mm
inner length 680 mm
width 40 mm - connection \varnothing 13 mm
upon request nut and washer
for Rotisserie electric (CB) E-12P



CB 07030563

CB 07032325

3755673 HEATING ELEMENT 1500W 230V
overall length 588 mm
inner length 519 mm
width 45 mm - fittings \varnothing 14 mm
for Rotisserie electric (CB) GV16 - GV16MAN - GV20
GV20MAN



CB 07030017

3355353 HEATING ELEMENT 1800W 380V
overall length 740 mm
inner length 680 mm
width 40 mm - connection \varnothing 13 mm
upon request nut and washer
for Rotisserie electric (CB) E-8P



CB 07031230

3355354 HEATING ELEMENT 1900W 240V
overall length 740 mm
inner length 680 mm
width 40 mm - connection \varnothing 13 mm
upon request nut and washer
for Rotisserie electric (CB) E-8P



CB 07032324

3355363 HEATING ELEMENT 2000W 230V
length 200 mm - width 35 mm
for 180 mm tangential fan



CB 07032361

3355351 HEATING ELEMENT 220W 240V
length 410 mm
for Sausage grill electric (CB)
for Sausage grill electric (CF CENEDESE)



CB 07030052



CB



Suitable for:

Suitable for:

3355358 HEATING ELEMENT 2480/2700W 230/240V
 overall length 740 mm
 inner length 680 mm
 width 40 mm - fittings \varnothing 13 mm
 nut and washer on request
 for Rotisserie electric (CB) GV24 - GV28 - GV35
 GV42 - P7/5E

3755674 HEATING ELEMENT 2570/2800W 230/240V
 external \varnothing 190 mm - total height 70 mm
 flange 100x22 mm



CB 07030564

CB 07032326

CB 07030065

3355361 HEATING ELEMENT 3280W 230V
 overall length 1050 mm
 inner length 970 mm
 width 40 mm - fittings \varnothing 14 mm
 upon request nut and washer
 for Rotisserie electric (CB) P10/4E - P10/5E
 P10/6E - P10/8E



CB 07030900

Injectors

3500051 GAS JET M9x1 \varnothing 1.90 mm

3500052 GAS JET M9x1 \varnothing 2.00 mm



CB 08050030

CB 08052140

3500055 GAS JET M9x1 \varnothing 2.50 mm



CB 08052143



Suitable for:

CB



Suitable for:

Knobs

3241400 BLACK KNOB \varnothing 70 mm UNIVERSAL
D shaft hole 10x8 mm



CB 10010607

3241450 SELF-STICK DISK WITH PILOT SYMBOL
external \varnothing 63 mm
for gas taps with pilot



CB 11050003

1241542 BLACK KNOB FOR CONVERTER
square hole 5x5 mm



CB 10010017

3241450 SELF-STICK DISK WITH PILOT SYMBOL
external \varnothing 63 mm
for gas taps with pilot



CB 11050003

Lamps

3221349 GLASS F.OVEN RECEPTACLE LAMP \varnothing 72 mm



CB

3221612 LAMP PROTECTION \varnothing 30x290 mm
for Rotisserie (CB)



CB 02030001

3221613 LAMP RECEPTACLE FOR QUARTZ LAMP
length 70 mm - width 50 mm
height 70 mm
for Rotisserie (CB) GV16 - GV16MAN - GV20
GV20MAN - GV24 - GV24MAN - GV28 - GV28MAN
GV35 - GV35MAN - GV42 - GV42MAN



CB 07CC0021

CB 07020008

3221612 LAMP PROTECTION \varnothing 30x290 mm
for Rotisserie (CB)



CB 02030001



Suitable for:

3221330 QUARTZ LAMP 1000W 230V
 overall length 480 mm
 glass length 338 mm
 for Rotisserie electric (CB) GV16 - GV16MAN - GV20
 GV20MAN - GV24 - GV24MAN - GV28 - GV28MAN
 GV35 - GV35MAN - GV42 - GV42MAN



CB

Suitable for:



CB 0702001

3221050 LAMP RECEPTACLE WITH LAMP E14 40W 240V
 lamp glass \varnothing 72 mm
 mounting hole \varnothing 68 mm
 max temperature 300°C
 for Display cabinet warm (CB) ESP/2 - EV16 - EV24
 EV35 - VR12E - VR12G - VR20 - VR24 - VR30
 VR36 - VR48 - VR8E



CB 07020018

CB 07020968

3221095 ORANGE INDICATOR LAMP 230V
 head \varnothing 13.5 mm - hole \varnothing 10 mm - 120°C
 universal application



CB 07051486

3221061 OVEN LAMP E14 25W 230V
 max temperature 300°C



CB

3221140 OVEN LAMP E14 40W 230V
 max temperature 300°C
 for Oven under cooktop



CB 07020966

3221330 QUARTZ LAMP 1000W 230V
 overall length 480 mm
 glass length 338 mm
 for Rotisserie electric (CB) GV16 - GV16MAN - GV20
 GV20MAN - GV24 - GV24MAN - GV28 - GV28MAN
 GV35 - GV35MAN - GV42 - GV42MAN



CB 07020001

3221080 RED INDICATOR LAMP 230V
 head \varnothing 13.5 mm - hole \varnothing 10 mm - 120°C



CB 07050994



Suitable for:

CB



Suitable for:

Lava rock grids

3185021 STAINLESS STEEL GRILL 426x250x20 mm
for Lava rock grill gas (CB) I65 - I65MOB



CB 01039000

CB 14081897

3185020 STAINLESS STEEL GRILL 426x323x20 mm
for Lava rock grill gas (CB) I47 - I47MOB
I80MOB/P - I80P



CB 14081834

Lavarock

3310001 LARGE LAVA ROCK 9 Kg
large size



CB 05050501

3310007 MEDIUM-FINE LAVA ROCK 5 Kg
medium size



CB

3310008 MEDIUM-LARGE LAVA ROCK 5 Kg
medium-large size



CB

Microswitches

3240040 MICROSWITCH OMR 12A 250V
6.3x0.8 terminal
complete with boss and button
for Pasta cooker (SILKO) CP41 - CP42 - CP45 - CP61
CP62 - CP65 - CP81 - CP82 - CP84 - CP85
for Pot stove (SILKO) CV20 - CV21 - CV22 - CV40
CV41 - CV42 - CV44 - CV45 - CV60 - CV61 - CV62
CV65 - CV81 - CV85



CB 08060613



Motors

3240620 FAN MOTOR 47W 230V 50Hz
complete with impeller fan \varnothing 150 mm
for Rotisserie (CB)



CB 07010007

3240000 MOTOR WITH FAN 45W 220V 50/60Hz
fan \varnothing 150 mm
for Hot cupboard
for Warm table



CB 07010013

CB 07010078

Piezo igniters

3001007 PIEZO IGNITER
a \varnothing 22 mm hole is needed for the assembly
2.4 mm \varnothing male faston connector
for Lava rock grill gas (FAGOR)



CB 08061351

Pilot burners and accessories

3020093 BURNER INJECTOR ASSEMBLY
with LPG and natural gas nozzles M9x1
pipe \varnothing 12 mm



CB 01007000

CB 08100001

CB 08100003

3020090 INJECTOR ASSEMBLY FOR PILOT BURNER
complete with tube for flame passing



CB 08070002

CB 08100123

3020023 LEFTHAND PILOT ASSEMBLY
with sparking plug, tube, pilot and bracket



CB

3020092 LEFTHAND PILOT BRACKET
for pilot assembly mounting



CB 01110014

CB 01111303

3020090 INJECTOR ASSEMBLY FOR PILOT BURNER
complete with tube for flame passing



CB 08070002

CB 08100123

3020088 PILOT BURNER TUBE



CB 04030010

CB 04360001



Suitable for:

3020064 ROUND IGNITION ELECTRODE \varnothing 7x44 mm
model 5/A
fitting \varnothing 11 mm - with fixing nuts
overall model 70 mm



CB 0808003

CB 0808005

CB

Suitable for:



3020092 LEFTHAND PILOT BRACKET
for pilot assembly mounting



CB 01110014

CB 01111303

3020088 PILOT BURNER TUBE



CB 04030010

CB 04360001

3020054 PILOT JET \varnothing 0.20 mm



CB 08120030

3020022 RIGHTHAND PILOT ASSEMBLY
with sparking plug, tube, pilot and bracket



CB

3020088 PILOT BURNER TUBE



CB 04030010

CB 04360001

3020090 INJECTOR ASSEMBLY FOR PILOT BURNER
complete with tube for flame passing



CB 08070002

CB 08100123

3020091 RIGHTHAND PILOT BRACKET
for pilot assembly mounting



CB 01110013

CB 01111302



Suitable for:

3020064 ROUND IGNITION ELECTRODE \varnothing 7x44 mm
model 5/A
fitting \varnothing 11 mm - with fixing nuts
overall model 70 mm



CB 0808003

CB 0808005

CB

Suitable for:



3020091 RIGHTHAND PILOT BRACKET
for pilot assembly mounting



CB 01110013

CB 01111302

3020006 THREE-FLAME PILOT BURNER SIT
multigas with jet \varnothing 0.20 mm
with 3 positions bracket
for Bain-marie gas (FAGOR)
for Bain-marie gas (GIGA) - Series 650
Series 700 - Series 900
for Boiling pan gas (FAGOR)
for Fry top gas (GIGA) - Series 650 - Series 700
Series 900
for Lava rock grill gas (GIGA) - Series 650
Series 700 - Series 900
for Oven under cooktop gas (FAGOR)



CB 08100602

Probes

3445107 PTC PVC PROBE 3000 mm
2-wire probe temperature range $-30+80^{\circ}\text{C}$
bulb \varnothing 6x40 mm



CB 09040008

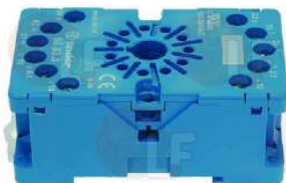
3397093 THERMOCOUPLE PROBE TCJ
2 wires - temperature $0-250^{\circ}\text{C}$
probe length 100 mm - \varnothing probe 6 mm
cable length 950 mm



CB 09040001

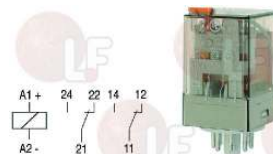
Relays

3351158 BASE UNDECAL ES11 10A 400V
11 poles



CB 07072135

3351151 RELAY 60.12.8.230.0040 10A 250V 50/60Hz
2 switching contacts
manual operation push-button



CB 07072134



Suitable for:

CB



Suitable for:

Rotary switches

3211004 SWITCH CS 0258910 A2500
 contact capacity 25A 600V - max 60/75°C
 square shaft 6x6 mm
 for Rotisserie electric (CB)



CB 07CC0084

CB 07040976

Sparking and detection plugs

3020064 ROUND IGNITION ELECTRODE \varnothing 7x44 mm
 model 5/A
 fitting \varnothing 11 mm - with fixing nuts
 overall model 70 mm



CB 08080003

CB 08080005

3020067 SQUARE IGNITION ELECTRODE 6/7x53 mm
 total length 85 mm



CB

Spits, sticks and rotisserie accessories

3162001 END FORK
 square hole 11.3 mm



CB 01080018

CB 04010537

3162003 WING BOLT M6x20 UNI 5449
 for end fork



CB 03010002

CB 03010062

CB 03011212

3162002 MIDDLE FORK
 square hole 11.3 mm



CB 01080017

CB 04010536

3162003 WING BOLT M6x20 UNI 5449
 for end fork



CB 03010002

CB 03010062

CB 03011212



Switches

3319463 BLACK DOUBLE-POLE SWITCH 16A 250V
 with orange indicator lamp and protection cap
 silk-screet printing "light on"
 max temperature 120°C
 mounting hole 22x30 mm



CB 07040518

3319374 BLACK TWO-POLE PUSH-BUTTON 16A 250V
 with protection cap
 silk-screen printing "ignition"
 max temperature 120°C
 mounting hole 22x30 mm
 for Rotisserie gas (CB) G-12P - G-20P - P10/4
 P10/5 - P10/6 - P10/8 - P7/5



CB 07040002

3319054 BLACK TWO-POLE SWITCH 16A 250V
 with green led indicator lamp
 silk-screen printing "gearmotor"
 max temperature 120°C
 mounting hole 22x30 mm
 for Rotisserie electric (CB)
 for Sausage grill electric (CB)



CB 07040519

3319055 BLACK TWO-POLE SWITCH 16A 250V
 with red led indicator lamp
 silk-screen printing "heating element"
 max temperature 120°C
 mounting hole 22x30 mm
 for Rotisserie electric (CB) E-12P - E-8P



CB 07042133

3319254 BLACK TWO-POLE SWITCH 16A 250V
 with protection cap
 max temperature 120°C
 mounting hole 22x30 mm



CB 07040032

3319376 BLACK BIPOLAR PUSH-BUTTON 16A 250V
 with push-button cap
 temperature max. 120°C
 mounting hole 22x30 mm



CB 07040033

3319375 BLACK TWO-POLE SWITCH 16A 250V
 with protection cap
 "manual - automatic" silk-screen printing
 max temperature 120°C
 mounting hole 22x30 mm



CB 07040011

3319464 GREEN TWO-POLE SWITCH 16A 250V
 with indicator lamp and protection cap
 silk-screen printing 0 - I
 max temperature 120°C
 mounting hole 22x30 mm



CB 07040015



Suitable for:

CB



Suitable for:

Tangential fans

3526150 TANGENTIAL FAN 180 mm LEFT
230V 50/60Hz - ø 60 mm - 25 W
operating temperature -30°+135°C



CB 07012360

Terminal blocks

3247050 3-POLES TERMINAL BLOCK FV110 40A 450V
for cable ø 6 mm max.
operating temperature 150°C



CB 07100010

Thermocouples and accessories

3440853 THERMOCOUPLE SIT M8x1 60 cm - 10 PCS



CB 08090003

3440053 THERMOCOUPLE SIT M8x1 60 cm THREAD M8x1



CB 08090003

3440853 THERMOCOUPLE SIT M8x1 60 cm - 10 PCS



CB 08090003

3440836 THERMOCOUPLE SIT M9x1 85 cm - 10 PCS



CB 08090604

3440860 THERMOCOUPLE SIT M9x1 85 cm - 10 PCS



CB 08090001



CB



Suitable for:

3440060 THERMOCOUPLE SIT M9x1 85 cm THREAD M8x1



CB 08090001

Suitable for:

3440860 THERMOCOUPLE SIT M9x1 85 cm - 10 PCS



CB 08090001

3440036 THERMOCOUPLE SIT M9x1 85 cm.



CB 08090604

3440836 THERMOCOUPLE SIT M9x1 85 cm - 10 PCS



CB 08090604

Thermostats

3444510 SINGLE-PHASE THERMOSTAT 30-110°C

D-shaped pin \varnothing 6x4.6 mm
capillary 850 mm - 16A 250V
bulb \varnothing 6x138 mm - with adapter nipple bland M9x1



CB 09010015

3444266 SINGLE-PHASE THERMOSTAT 338°C

with manual reset
covered capillary length 830 mm - 16A 250V
button bulb \varnothing 14x10 mm
for Rotisserie (CB)



CB 09010019

3444627 SINGLE-PHASE THERMOSTAT 45-255°C

D-shaped pin \varnothing 6x4.6 mm
covered capillary length 900 mm
bulb \varnothing 6x74 mm
for Fry top (EMMEPI) - Series 650 - Series 700
Series 750 - Series 900
for Oven under cooktop (EMMEPI) - Series 650
Series 700 - Series 750 - Series 900
for Rotisserie (CB)



CB 09010014

3444174 SINGLE-PHASE THERMOSTAT 50-320°C

D-shaped pin \varnothing 6x4.6 mm
capillary length 900 mm - 16A 250V
bulb \varnothing 3x220 mm



CB 09010021

3444586 SINGLE-PHASE THERMOSTAT 75-450°C

D-shaped pin \varnothing 6x4.6 mm
covered capillary length 900 mm - 16A 250V
bulb \varnothing 4x228 mm



CB 09010027



Suitable for:

CB



Suitable for:

Timers

3322257 CONTROLLER P205 2 CAMS 230V 50/60Hz
cycle 144 minutes - D-shaped pin \varnothing 6x4.6 mm
for Rotisserie electric (CB) GV-16MAN - GV-20MAN
GV-24MAN - GV-28MAN - GV-35MAN - GV-42MAN



CB 09030002

3446001 TIMER 120 MINUTES
complete with silk-screen printed plate
mechanical timer with sound alarm
mechanical movement with balance wheel
manual left hand positioning possible
120 minutes manually set cycle
bipolar with contact capacity 16(3)A 250V
max temperature 125°C
D-shaped pin \varnothing 6x4.6 mm



CB 09030065

Transformers

3445110 TRANSFORMER 230V/12V 3VA
primary tension 230Vca 50/60Hz
secondary tension 12Vca 3VA
room temperature 0+60°C
screw terminal block
IMQ approved



CB 07062363